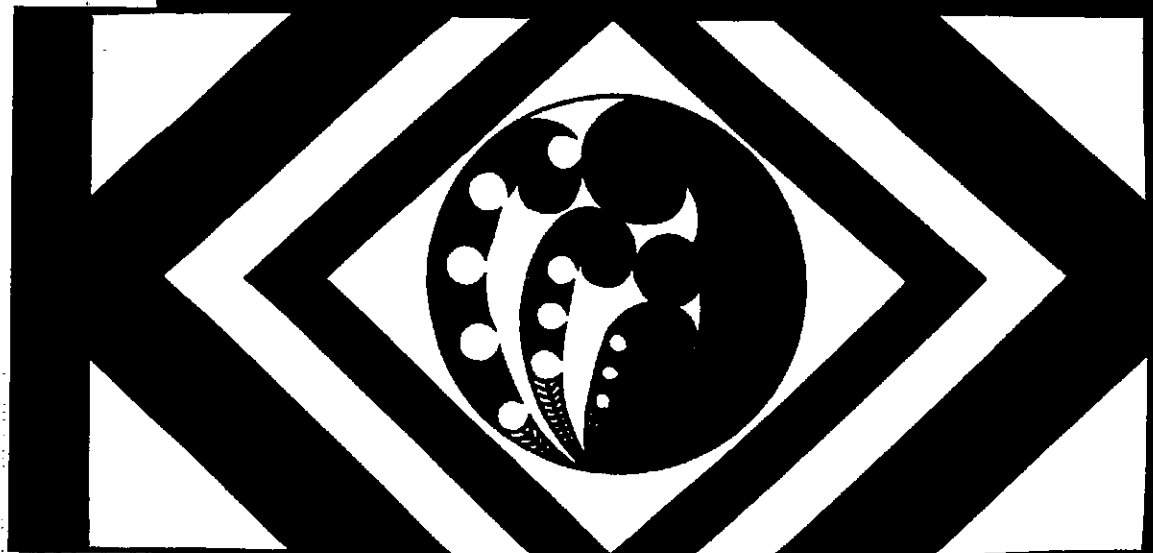


2010

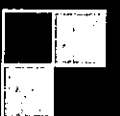
# Te Māramatanga o te Tohu.

TRANSLATION OF OUR KAPAHAKA TOHU



MATUA Shane Ruwhiu.  
WEST END SCHOOL

9/22/2010



## **WEST END SCHOOL – THE THINKING SCHOOL**

**Kia Kotahi ra māku e mea atu...**

Together we can fulfil our greatest desire

**He Ngākau Pātukituki o Te Kura o Urumutu....**

The circle represents the many heart beats of West End School.

**Ko ēnei ngā Pou Tikanga o Te Kura o Urumutu**

These are the three core values of West End School

**Mahi tahi** - Work together

**Whakaaro tahi** - Think together

**Akoako tahi** - Learn together

**Ko ēnei ngā Pou Ariki o Te Kura o Urumutu**

These are the five teams that exists at West End School

**Ngā Akoranga Motuhake** - Special Learners

**Ngā Pihipihinga** - Junior School

**Ngā Tipuranga** - Junior/ Middle School

**Te Puāwaitanga** - Middle School

**Te Wāo Nui ā Tāne**- Senior School

**Ko ēnei ngā Pou Rangātira o te Kura o Urumutu**

The leadership model that operates at West End School

**Ngā Ropū Matua** - this group consists of all the committees that operate at the school

**Te Tumuaki me ōna Ngākau** - this tribute is to all our kaiako lead by our Principal

**Te Poari Matua** - the final group is West End Board of Trustees

**Ko ēnei ngā Pou Mātauranga o Te Kura o Urumutu**

Curriculum learning from the three baskets of knowledge

**Tua-Uri** - literally translates as beyond in the world of darkness’.

**Te Tua-Atea** - is the world beyond space and time.

**Te Aro-Nui** - translates as ‘that before us’

**Ko ēnei ngā Raukura o Te Kura o Urumutu**

These are the Plumes that signify learning in a harmonious environment

**Kororia ki te atua** - Glory to our creator upon high

**Maungarongo ki runga i te whenua** - Peace on earth

**He whakaaro pai ki tangata katoa** - Goodwill to all mankind

**Tini whetu ki te rangi ko Rangitaane ki te whenua**

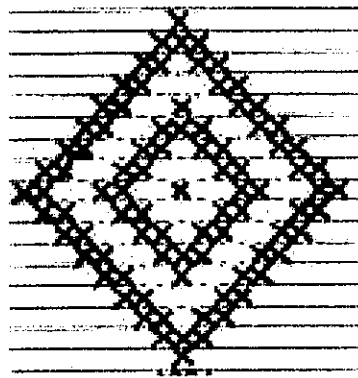
Tararua and Ruahine are our Mountains

Manawatū is our river

Rangitaane are the people

**Ko Tangaroa ara rau**  
**Tangaroa of many paths**

According to Māori creation traditions the god of the sea and progenitor of fish is Tangaroa, the son of Ranginui (the sky father) and Papatūānuku (the earth mother). Tangaroa's son Punga was the father of Ikatere went to the sea, became fish. Tūtewehiwehi offspring became reptiles



Ikatere and Tūtewehiwehi. where he and his children journeyed inland, and he and his

The flounder is a fairly common flat fish found near the beaches and estuaries on the New Zealand coast. Of distinctive diamond shape and delicious flavour, this fish is a favourite food of New Zealanders' in the know. The constellation forms a diamond shape and the experts of old had it that they swing in their position near the Milky Way, according to the weather.

common flat fish found near the the New Zealand coast. Of and delicious flavour, this fish is Zealanders' in the know. The

When the diamond lies parallel to the Milky Way, expect fine weather, when the diamond points away from the Milky Way, prepare for a spell of bad weather. This was a convenient way of forecasting the weather in the old days when the Maori lived on the sea-coast, subsisting mainly on sea-foods. When the indications by the stars were favourable, great harvests were the order of the day as the flounder came in to the shallow waters. Similarly, other sea-foods were taken in abundance. The design signified good weather, abundance of food and well-fed families.

**NGĀ TAE E TORU**  
**The three colours**

**BLACK** represents Te Korekore (the realm of potential being). It represents the long darkness from which the Rangi and Papa emerged.

**RED** represents Te Whai Ao (coming into being). It symbolises Papatuanuku, the earth-mother, the nurturer of all living things.

**WHITE** represents Te Ao Mārama (the area of being and light). It symbolises the physical humankind, purity, harmony, enlightenment and stability.